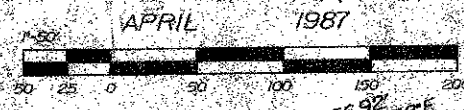


58/168

# BOCA WINDS - PARCEL F

A PART OF 'BOCA WINDS, PLANNED UNIT DEVELOPMENT'  
LYING IN SECTION 27, TOWNSHIP 47, SOUTH, RANGE 41 EAST  
BEING A REPLAT OF A PORTION OF TRACTS 12, 13, 14, 15 and 16 OF FLORIDA FRUITLANDS COMPANY'S SUBDIVISION NO. 2, P.B. 1, PG. 102 OF THE PUBLIC RECORDS OF THE COUNTY OF PALM BEACH, STATE OF FLORIDA



168

STATE OF FLORIDA  
COUNTY OF PALM BEACH  
THIS PLAT WAS FILED FOR RECORD  
AT \_\_\_\_\_ THIS \_\_\_\_\_  
OF \_\_\_\_\_ AD. 1987, A.D.  
DAILY RECORDED IN PLAT BOOK  
ON PAGES \_\_\_\_\_  
JOHN B. DUKIE,  
CLERK OF THE CIRCUIT COURT  
BY \_\_\_\_\_  
E.C.



**NOTES:**  
BUILDING SETBACK REQUIREMENTS ARE AS PER THE PALM BEACH COUNTY ZONING REGULATIONS.  
THERE MAY BE ADDITIONAL RESTRICTIONS THAT ARE NOT RECORDED ON THIS PLAT THAT MAY BE FOUND IN THE PUBLIC RECORDS OF THIS COUNTY.  
NO LANDSCAPING OR ABOVE GROUND ENCROACHMENTS ARE PERMITTED WITHIN THE DRAINAGE MAINTENANCE EASEMENTS.

APPROVED BY  
RECEIVED BY

MATCH LINE  
SEE SHEET 3 OF 4

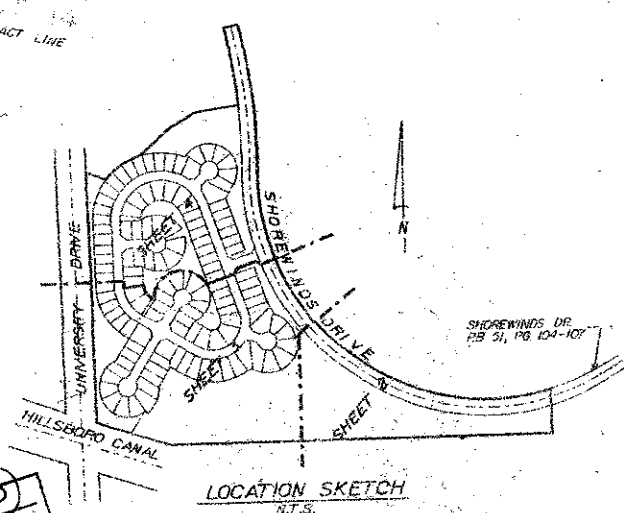
0201-007

CONSULTING ENGINEERING, INC.  
CONSULTING ENGINEERS & LAND SURVEYORS  
GLENDALE  
3601 W. OAKLAND AVE. SUITE 200  
FT. LAUDERDALE, FLORIDA 33309

**Boca Winds - Parcel F**

SECTION 27  
PAGE 1  
ELEVATION  
ZONING  
ZIN CODE  
PUD HP ARE

58/168



STURDENT REQUIRED